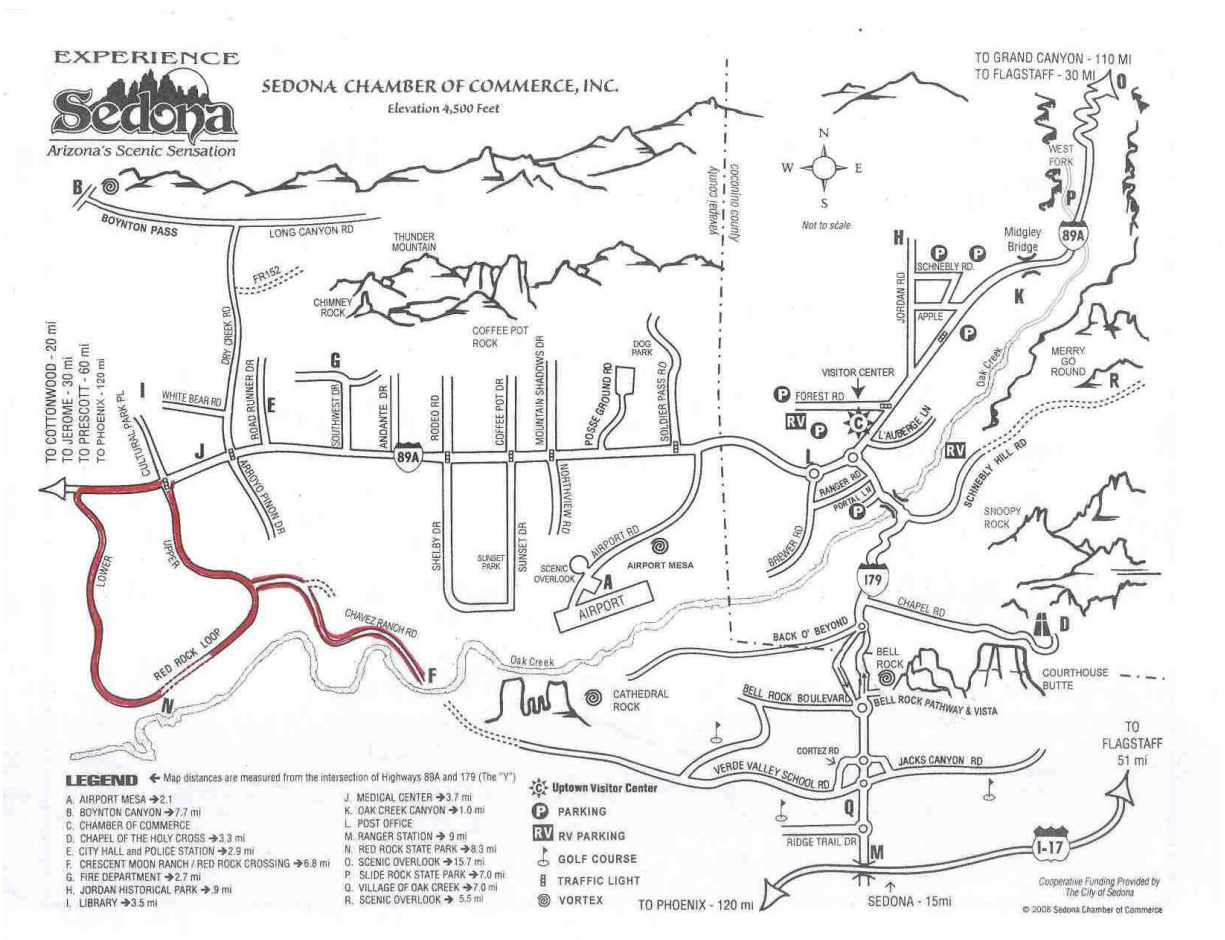


Scenic Drives from/to Sedona

Less than two-hour Scenic Drive

Red Rock Loop Road

Magnificent views of Cathedral Rock, access to Red Rock Crossing / Crescent Moon Ranch, and Red Rock State Park. Paved, with one gravel section. From Sedona, drive west on State Route 89A. Turn left on Upper Red Rock Loop Road. This winding road has several scenic pullouts. At the bottom of the hill, turn left on Chavez Ranch Road to Crescent Moon Recreation Area or bear right and continue on to Red Rock State Park. Part of the road is gravel, and then becomes Lower Red Rock Loop Road 5 miles back to State Route 89A. Turn right to return to Sedona on State Route 89A.

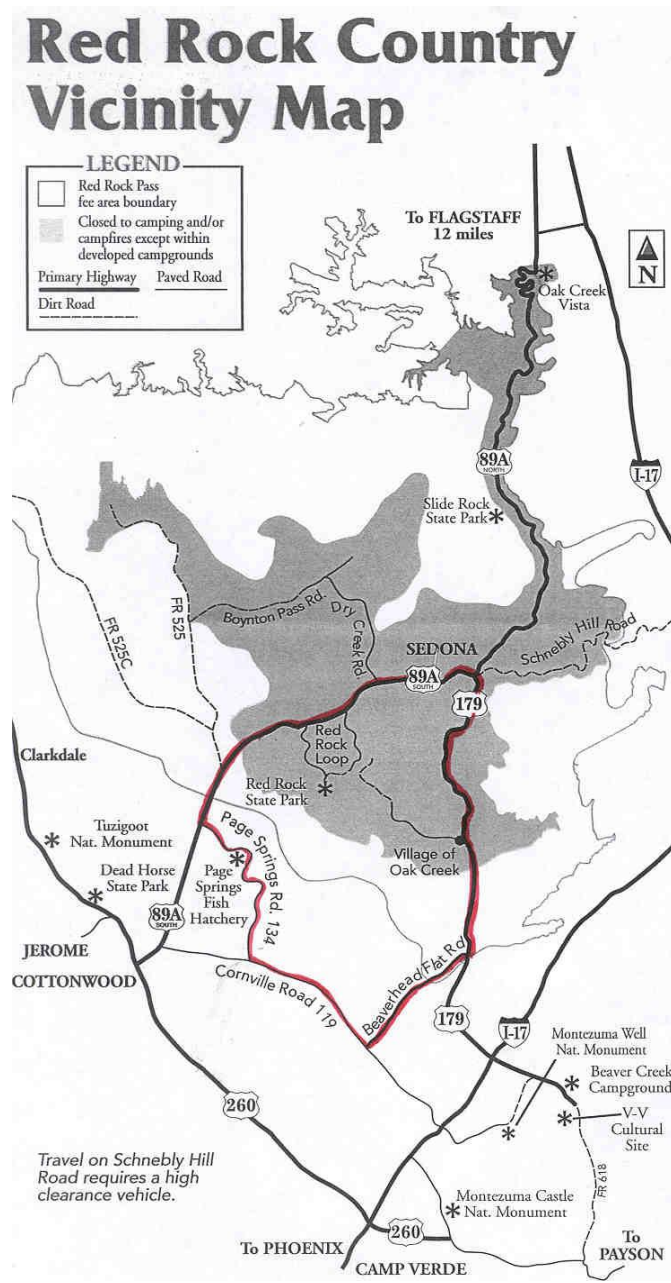


Less than two-hour Scenic Drive

Page Springs Loop

Red Rock views, fish hatchery, desert grassland, and return past Bell Rock and trailheads.

From Sedona, drive 12 miles west on State Route 89A to Page Springs Road. Travel 3 miles to the entrance to the Page Springs Fish Hatchery. There are several wineries on the Page Spring Road. Continue to Cornville Road. Turn left onto Beaverhead Flat Road and travel 7 miles to State Route 179. Turn left at State Route 179 and find the Village of Oak Creek, Bell Rock and trailheads. Total trip: About 1 hour 45 minutes and 40 miles.



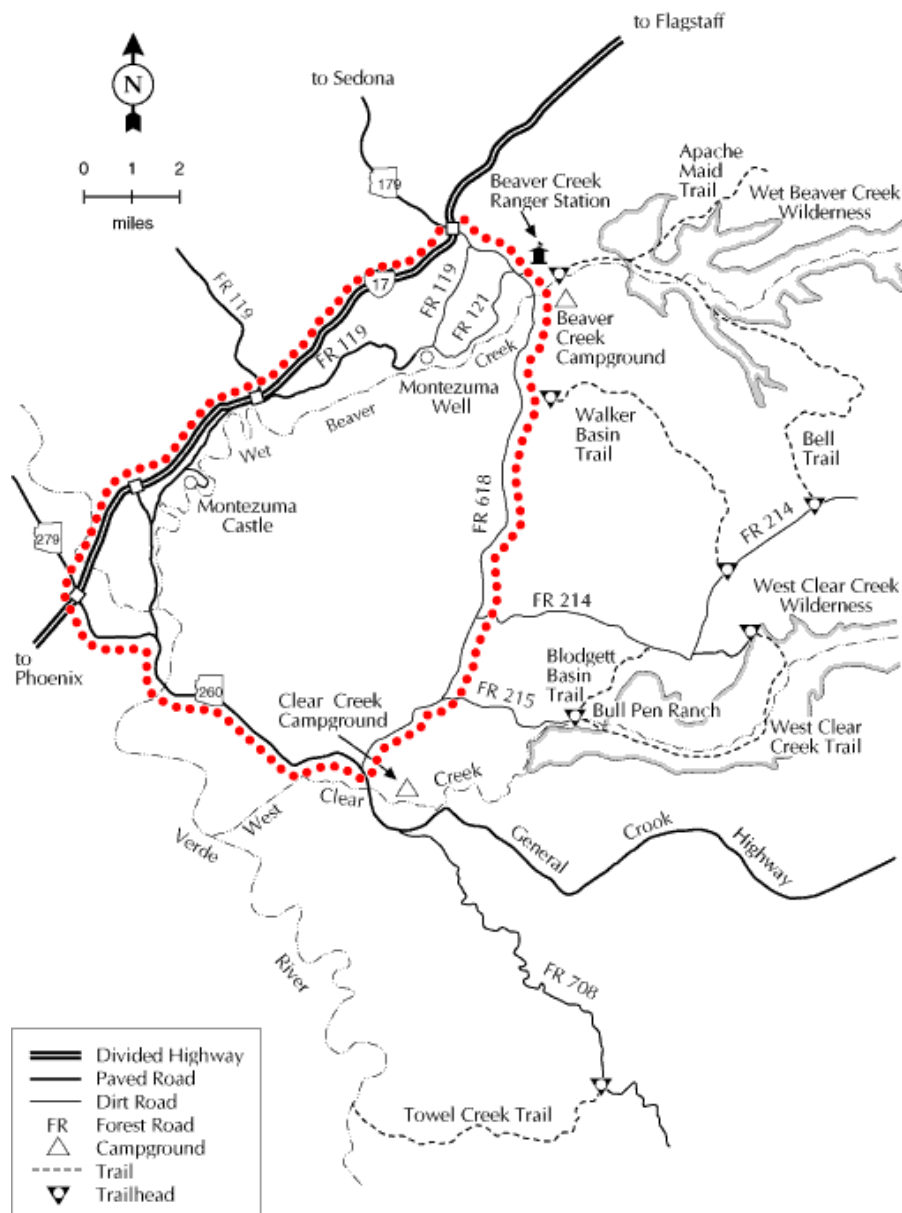
Half Day Scenic Drive

Desert Canyon Loop

This is a drive through scenic desert country where you'll see colorful canyons, cultural sites, lush oasis, picturesque ranches, and out-of-the-way Native American ruins. The route skirts the lower elevations of Arizona's rim country where red rock canyons spill out from under thick basalt flows. The road cuts two of these canyons and offers access to a third along the way. Roadside signs point the way to a number of hiking trails and a few spur roads leading off into the back country. Keep an eye out for roadrunners, coyotes and javelinas as you drive. The road is a bit rough, requiring slow speeds. FR 618 is graveled and suitable for passenger cars; however, it can become soft and slippery when wet.

From Sedona take State Route 179 to the junction with I-17, continue southeast under the highway onto FR 618. Follow this road along the base of the Mogollon Rim 13 miles to State Route 260 (General Crook Highway) and turn west (right) 9 miles back to I-17.

DESERT CANYON LOOP



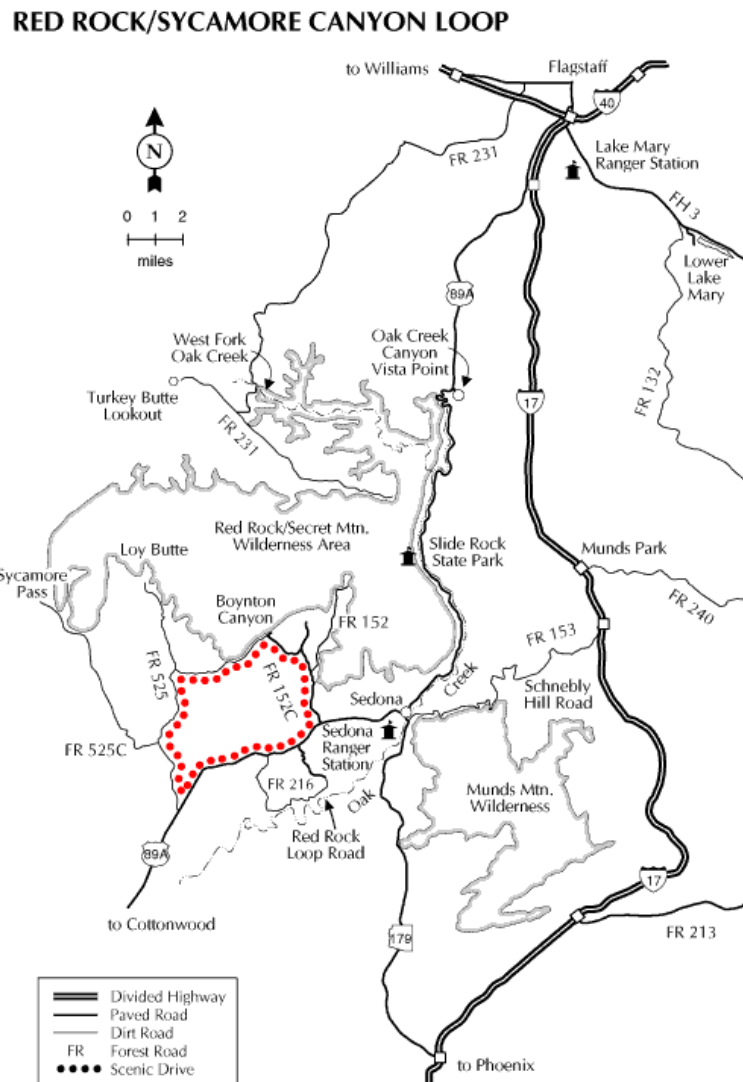
Half Day ~ Full Day Scenic Drive

Red Rock / Sycamore Canyon Loop

This drive takes you into the heart of the magnificent Sedona Red Rock Country. The route hugs to the foot of those colorful cliffs and offers the option of four scenic side trips that lead to some of the most exciting features in Red Rock Country.

Take State Route 89A through West Sedona to Dry Creek Road (FR 152C). Turn north and proceed along FR 152C for 2 miles to Vultee Arch Road and another 2.5 miles to the intersection with Boynton Canyon Road. FR 152C continues southwest (left). In about 4 miles, FR 152C intersects FR 525. From here you turn north (right) to the Loy Butte spur or south (left) to continue the drive. In another 4 miles FR 525 intersects FR 525C (Sycamore Pass Spur). This road will take you to the east side of Sycamore Canyon. Continue south 5.5 miles to State Route 89A and another 5.3 miles on pavement back to Sedona. The Upper Red Rock Loop Road, which accesses Red Rock Crossing is located off State Route 89A about 1 mile south of Sedona.

FR 152C is paved to Doe Mountain Trailhead and Red Rock Loop Road is paved except for the last mile or so. The rest of this route is unpaved and can become muddy and slippery when wet.



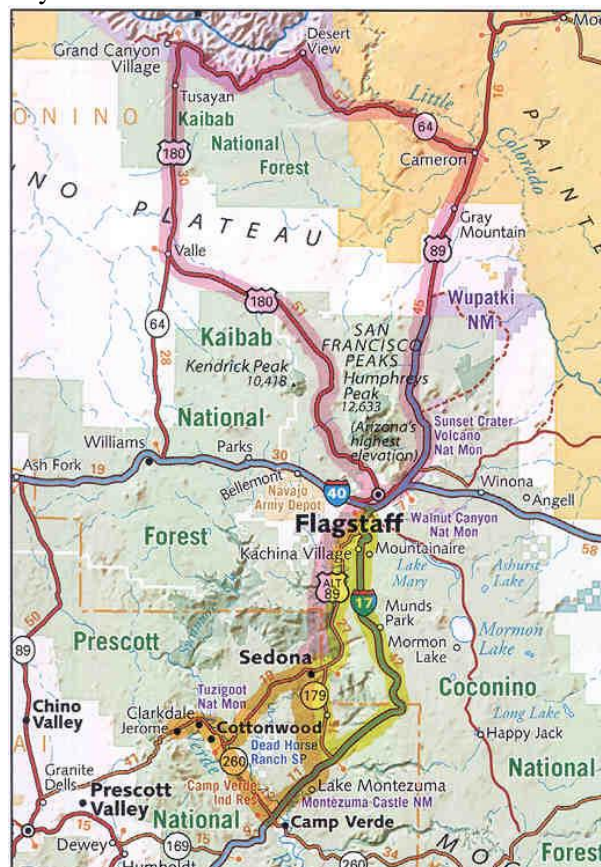
Full Day Scenic Drive

Verde Valley Loop (indicated in orange below)

Take SR 179 through Village of Oak Creek to Interstate 17 and head south toward Camp Verde. Exit the interstate on Middle Verde Rd. (Exit 289), travel east and watch for signs to Montezuma Castle National Monument and Montezuma Well (Native American ruins). Continue to Camp Verde and Fort Verde State Historic Park. Take SR 260 toward Cottonwood to Out of Africa Wildlife Park. Continue west on SR 260 to Cottonwood, where you will drive through “Old Town” and follow the original road to Clarkdale for a couple of miles before turning north on Tuzigoot Road, which leads to Tuzigoot National Monument (a prehistoric Native American ruin). Continue on the old road to Clarkdale and follow signs to the Verde Canyon Railroad (four-hour train trip on a historic route) depot. Continue through Clarkdale, which was established as a company town when the railway serviced a large smelting operation. Drive north to SR 89A and climb the twisting road up Cleopatra Hill, the spectacular must-see setting of Jerome. Return to Sedona, soaking in distant views of Flagstaff’s San Francisco Peaks and Sedona’s massive red-rock formations as you descend Cleopatra Hill, and continue through Cottonwood on SR 89A.

Grand Canyon Loop (indicated in pink below)

Travel north on SR 89A through spectacular Oak Creek Canyon, continue north through Flagstaff to U.S. Route 180, which heads northwest through the Kaibab National Forest. This scenic route circles the base of the majestic San Francisco Peaks, which are snow-covered during late fall, winter and early spring. In early fall, the peaks present a visual symphony of color when aspen groves turn from green to gold. After intersecting with SR 64, continue north to the South Rim of the Grand Canyon. Follow SR 64 east along the rim, passing the historic lookout tower at Desert View, the last visual of the Grand Canyon. Travel through the Navajo reservation to U.S. Route 89. Turn north (left) 1 mile to historic Cameron Trading Post. Upon leaving, turn south (right) back onto U.S. Route 89 towards Flagstaff and enjoy another startling view of the San Francisco Peaks as you travel past Wupatki, Sunset Crater Volcano (the loop connecting Wupatki and Sunset Crater National Monuments is another scenic drive) and Walnut Canyon National Monuments. After passing through downtown Flagstaff and heading south on I-17, exit onto SR 89A and descend the switchbacks through Oak Creek Canyon into Sedona.



Full Day Scenic Drive

Sedona ~ Jerome ~ Prescott ~ Sedona Loop

Take State Route 89A to Cottonwood and turn left onto E Cottonwood Dt / SR 89A. Continue to follow SR 89A and climb the twisting road up Cleopatra Hill, the spectacular must-see setting of Jerome. From a roaring copper mining boom town of 15,000 people to Arizona's largest ghost town... and now, Arizona's coolest art colony. From Jerome, continue on SR 89A for about 26 miles, turn left onto SR 89, go 3 miles, enter next roundabout and take the second exit onto SR 89 S, and go about 4 miles to Prescott, AZ, "Everybody's Hometown." From Prescott, take SR 69 for about 14.8 miles, turn left onto SR 169 / E Cherry Rd., go 15.2 miles, and merge onto I-17 North via the ramp on the left toward Flagstaff. Return to Sedona, via SR 179 (Exit 298) through Village of Oak Creek (or SR 260 through Cottonwood).

